

## **Ber pa munyo yat lajin kwidi two jonyo kit ma dakta ociko kwede:**

Ibedo ma kwo dok ma komi yot

- Ibedo ki kero me timo tici weng.
- Iromo moko yub pi anyim
- Iromo bene nywalo lotino ma gipeke ki kwidi two jonyo ikom gi.

## **Rac pa munyo yat lajin kwidi two jonyo ma pe lube ki tam pa dakta:**

- Komi bi bedo lit tere-tere i doko goro.
- Kwidi two jonyo ngil ma pe dong winyo yat lajin kwidi two jonyo.
- Pe iromo timo tici kit ma kare ducu.
- Pe ibi nongo kwo mayot
- Iromo too woko bene!

# **KWO TYE NINING?**



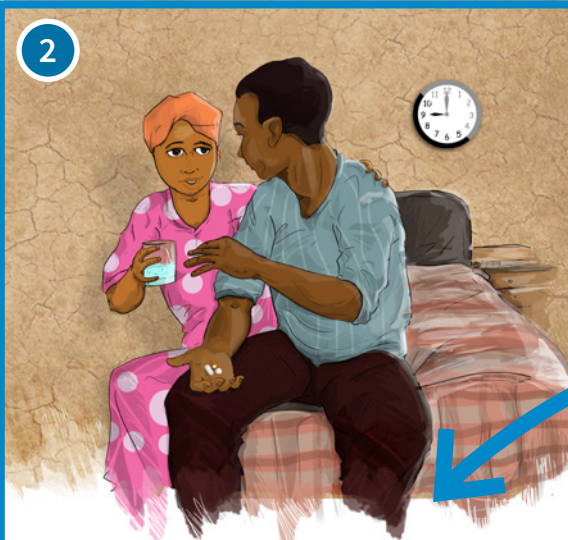
**Tye pi Miyo kony i kin wa**  
Caa weng apoyo wi lawota me munyo yate  
me jino kwidi two jonyo.

**DOR KWO NI IN KIKOMI**  
MUNY YATI ME JINO KWIDI TWO JONYO NINO WENG.



**Obulamu?**

# KWO TYE NINING?



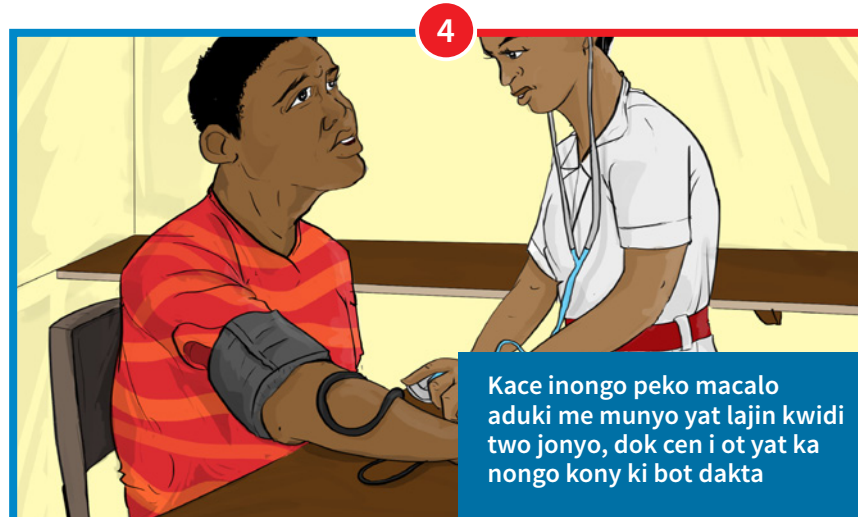
Ka itye i yat lajin kwidi two jonyo, cawa weng wi omyero opo me munyo ne i cawa kikome.



Rac pi yot komi kace pe imunyo yati me jino kwidi two jonyo kit ma dakta ociko kwede



Munyo yati me jino kwidi two jonyo kit ma dakta ociko kwede kore ki kore man weko ibedo ma komi yot dok nongo itwero timo tici weng.



Ka itye kamunyo yat lajin kwidi two jonyo neni l lubo cik pa dakta wek komi obed ma yot.

**DOR KWO NI IN KIKOMI. MUNY YATI ME JINO KWIDI TWO JONYO NINO WENG.**